

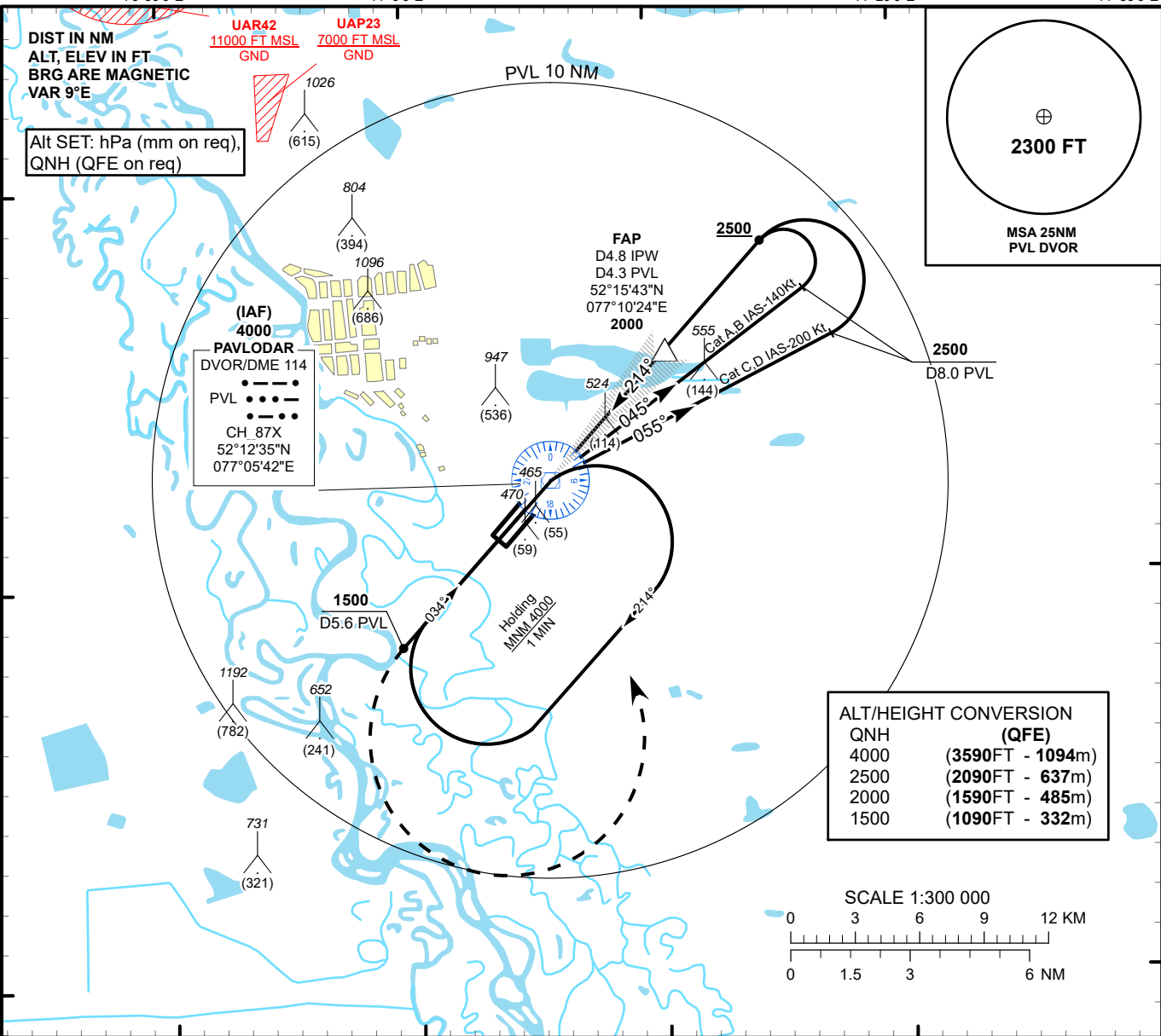
INSTRUMENT
APPROACH
CHART - ICAO

AERODROME ELEV **411 FT**
HEIGHTS RELATED TO
THR RWY21 - ELEV **410 FT**

ILS
LLZ 110.7
IPW
GP 330.2
CH 44X

PAVLODAR TOWER 119.8
PAVLODAR ATIS (EN) 134.6
PAVLODAR ATIS (RU) 133.6

PAVLODAR
ILS/DME Z
RWY 21



MISSED APPROACH
Climb on track 214° to 1500 or above outbound to 5.6 PVL. Turn LEFT to PVL. Climb initially to 2500, then as directed by ATC. RADIO FAILURE: in case of RCF climb to 4000 to PVL and join holding pattern. Missed approach turn speed limited to 240 Kt IAS maximum.

ILS RDH 51

ELEV 410
THR RWY 21

IAF 4000

DVOR/DME
PVL

FAP
D4.3 PVL
D4.8 IPW
2000

2500

TRANSITION ALT
10000

GP 3.0°

214°

214°

Aircraft Category		A	B	C	D	DIST to THR DME IPW	NM	1	2	3	4	4.8	
Straight-in Approach OCA/H						DME PVL	NM	0.5	1.5	2.5	3.5	4.3	
	CAT I	610(200)		610(200)		ALTITUDE	FT	780	1100	1430	1750	2000	
						HEIGHT	FT	(370)	(690)	(1020)	(1340)	(1590)	
DME IPW ZERO RANGED TO THR RWY 21													
Aerodrome Operating Minima DH ft x RVR(CMV)	ILS CAT I												
						GS	Kt	80	100	120	140	160	180
						Desc.Rate(5.2%)	ft/min	420	530	630	740	840	950

CHANGE: ALT. table revised, editorial.

PAVLODAR
ILS/DME Z

AERONAUTICAL DATA TABULATION

ILS/DME approach to RWY21 from PVL DVOR/DME	
Fix/point	Coordinates
(IAF) DVOR/DME PVL	52°12' 34.6"N 077° 05' 42.1"E
(FAP) D4.8 IPW, D4.3 PVL	52°15' 42.8"N 077° 10' 24.5"E
THR RWY21	52° 12' 12.95"N 077° 05' 08.58"E
LOC IPW	52° 10' 54.5"N 077° 03' 10.8"E